

# LSW two needle series (angular stitch)

High speed, Large vertical axis hook, Needle & Lower Feed, Reverse stitch and split needle bar, Lockstitch machine, Automatic Lubrication System



## Variety

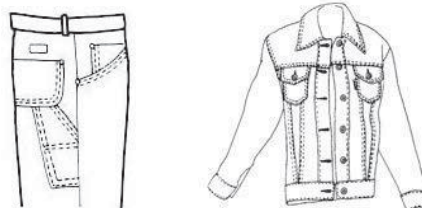
### LSW-27BLK



Angular stitching and/or straight stitching can be made by simplified operation

## Applications

- For sewing medium to heavy materials such as leather, coats, jackets and jeans which require decorative or functional angular stitching.



# LSW two needle series (angular stitch)

## Features

- Semi-automatic lubrication system.
- Large vertical axis hook (2.0 times).
- Automatic hook lubrication.
- Safety clutch prevents the hook from being damaged.
- Easy to operation of disengageable right and left needle bars by use of finger touch lever.

## Specifications

Variety	LSW-27BLK	
Number of needle	Two needle	
Max. sewing speed	2,400 s.p.m.	
Max. stitch length	4.5 mm	
Clearance under presser foot	by knee	13 mm
	by hand	7.0 mm
Needle bar stroke	33.20 mm	
Needle(standard)	DPx5 (#16)	
Hook	Large vertical axis hook (2.0 times)	
Lubrication	Semi-automatic lubrication type	
Bed size	20-25/64"x 7" (518 x 177 mm)	
Working space	10-5/32"x 4-21/64" (258 x 110 mm)	
Motor	Clutch motor	
Net weight(Head only)	34Kg	

NOTE: (1) Speed depends on threads, materials and type of operation  
(2) Specifications subject to change without notice

## Needle gauge list

Variety	Needle gauge size
<b>LSW-27BLK</b>	Standard : 1/4"(6.4 mm), 5/16"(7.9mm), 3/8"(9.5mm) Special : 1/8"(3.2 mm), 3/16"(4.8mm)



### SEIKO SEWING MACHINE CO., LTD.

2-13-6, Sakaecho, Funabashi-shi  
Chiba Prefecture, 273-0018, Japan  
Phone : +81-47-420-3561 (Overseas dept.)  
Fax : +81-47-420-3560  
E-mail : export@seiko-sewing.co.jp

Printed in Japan 2016.04

<http://www.seiko-sewing.co.jp/>