

FS700P

SERIES

4-needle, feed-off-the-arm,
interlock stitch machine for flatseaming



FS700P SERIES

Completely enclosed type, 4-needle, feed-off-the-arm,
interlock stitch machine for flatseaming

Step up to “Plus”

The world first, completely enclosed type



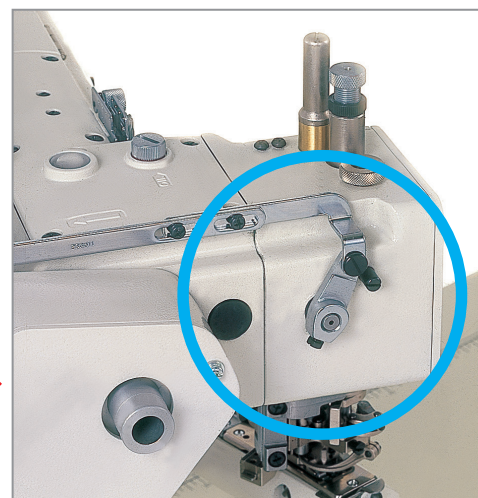
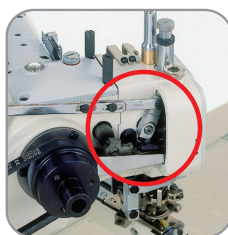
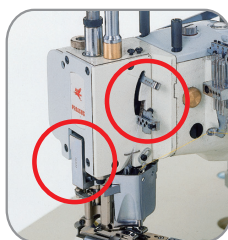
Point

01

"Oil Barrier" type machines that completely block oil leakage. Adopting PEGASUS' unique oil barrier technology!

- FS700P Series (4-needle, flatseamer) adopts the world's first machine bed equipped with a completely enclosed needle drive mechanism.
- FS700P Series is keeping high-quality and consistent stitches, and protects your important sewn products against oil stains, thanks to this high "Oil Barrier" effectiveness.

The world's first



Point

02

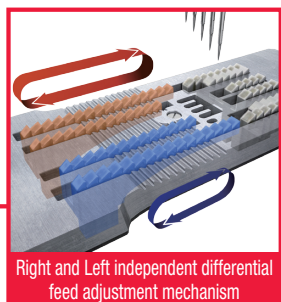
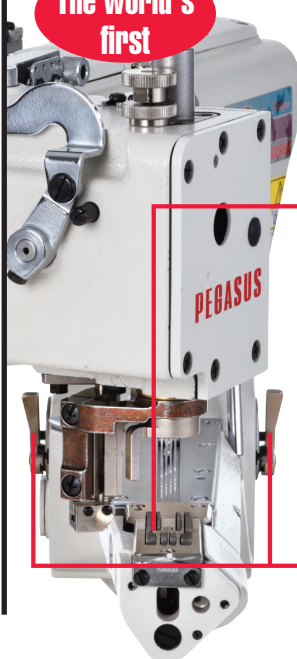
Differential feed ratio adjustable separately for the right and left hand sides

LaRgo

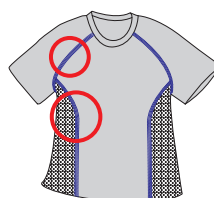
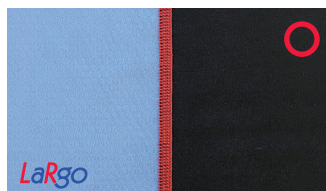
* Only for the FS700P-A series



The world's first



- The differential feed ratio can be adjusted separately, in order to respond to operations in which the machine is used to sew right- and left-hand side fabrics that have varying degrees of stretchability, and/or curved lines.
- The operator can handle the right- and left-hand side fabrics easily, without worrying about the different stretchability. The LaRgo achieves uniformly and beautifully finished products, regardless of the skill of the operator. These features reduce the operator's burden drastically, and also help increase productivity.



LaRgo

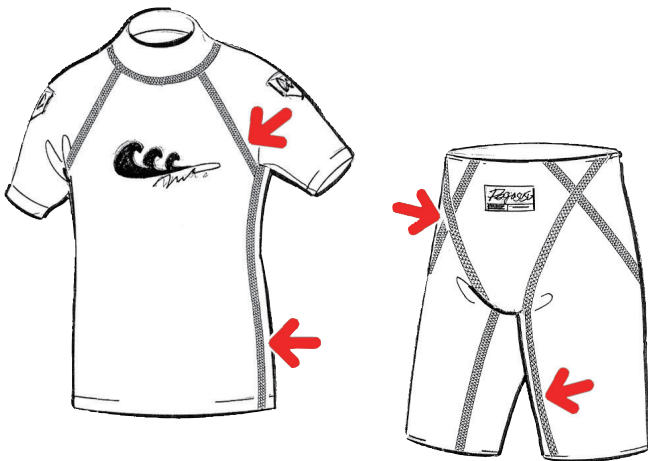
The letters L and R on the LaRgo come from the initial letters of "Left and Right" included in the description of the world's first left and right independent differential feed adjustment mechanism. In addition, the name "LaRgo" can be associated with a term in musical terminology that means "to play with the sound flowing."

Point

03

Responding to new material with consistent stitches, increasing the quality of sewn products

- This series responds to difficult-to-sew fabric and/or new highly stretchable material, such as swimsuits, achieving high-quality and consistent stitches that have never been produced before, regardless of the operations.

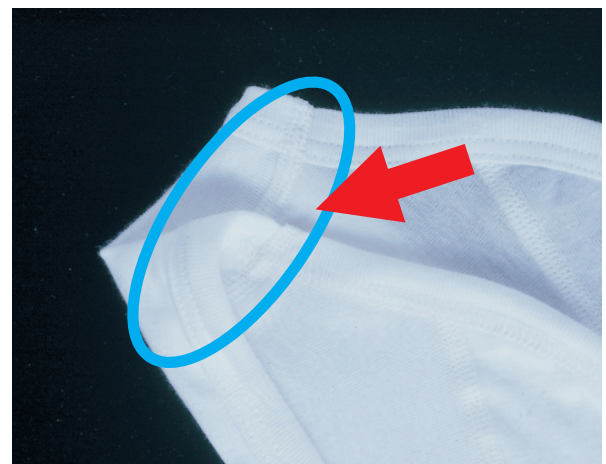
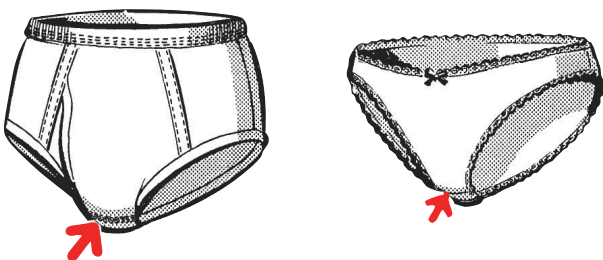


Point

04

Achieves neatly finished products with no yarn distortion on the fabric

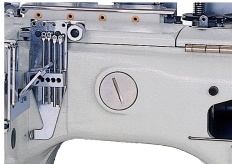
- Thanks to Pegasus' unique presser foot with the groove on its underside, the machines easily sew the difference on the cross seam sections of the overlapped areas.
- Therefore, the overlapped areas in tape binding and lace attaching operations on the fabric, such as briefs and panties, are flatly and beautifully finished, so they feel gentle on the skin without any uncomfortable touch.



Close-up

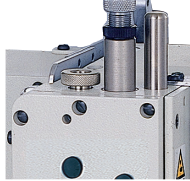
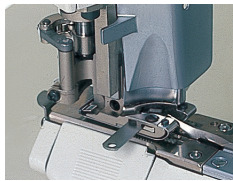
Easy maintenance

Timing adjustments of the needles and the loopers can be made from side of the arm bed. Differential feed ratio adjustments can be easily made by the lever.



Various kinds of features that increase quality

Thanks to the adoption of a fine adjustment mechanism for the presser foot lift, the clearance between the presser foot and the needle plate can be adjusted easily with the adjustment nut, according to the fabric. In addition, the presser foot pressure can also be adjusted finely. These features eliminate seam jamming and/or fabric damage by the feed dog, achieving neatly finished products.



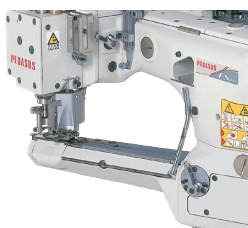
Operator-friendly, safe design

The driving parts of the looper are completely covered. The set screw for the cylinder cover is designed to be out of the way of the sewing.



Operators do not feel any stress with the easy-to-sew design, increasing productivity

The shape of the machines is designed to allow operators to sew the fabric in a comfortable posture. The design of the machines, featuring ease of operation with less stress, provides smooth sewing and increases production.

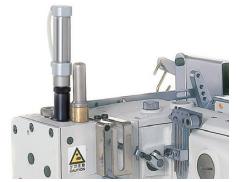


* Equipped with direct drive motor (option)

FS700P Devices

Pneumatic presser foot pressure regulator (PP)

- Thanks to the air-controlled presser foot pressure, the uniform and minimum possible presser foot pressure is always achieved according to the fabric and fabric weight being used. This feature prevents seam jamming on cross seam sections, damage to the fabric, and shining appearing on the fabric, contributing greatly to the stabilization and increase in quality. In addition, the presser foot pressure can be expressed in numerical form. Therefore, the presser foot pressure that is correct for each fabric can be reproduced easily and immediately.
- Thanks to the air-controlled engagement pressure of the knives, the engagement pressure is reduced, compared to conventional knives. This feature dramatically increases the durability of the knives.

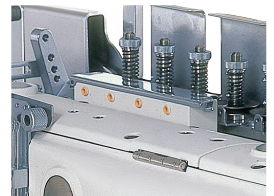


Presser foot lift (PL)

Pressing the treadle with the heel raises the presser foot. Ease of operation decreases operator fatigue.

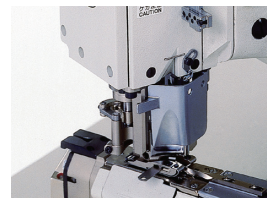
Needle thread lubricating device (HR)

The HR device helps the needle thread run smoothly through the machine, forming uniform stitches.



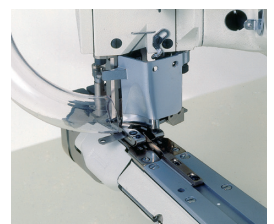
Thread chain cutter

A pneumatically operated device that cuts a thread chain. No scissors are needed. Operating efficiency is dramatically increased.



Waste collector

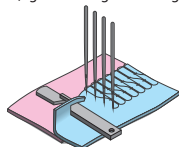
This pneumatic device sucks up cutting waste generated during sewing, providing clean and comfortable working conditions.



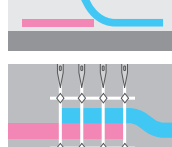
Full line of subclasses

These subclasses respond to the diversified needs of the market, from underwear to garments made of fleece. Two types of cutting for the fabric edge are available, single and double edge

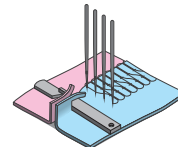
■ Single edge trimming
(right-side edge trimming)



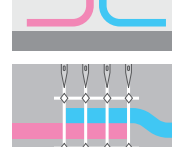
■ Double edge trimming



■ Double edge trimming



■ Double edge trimming



●FS700P Subclasses

Application	Fabric weight			Machine model	Trimming	Remarks
	Light	Medium	Heavy			
Joining shoulders of T-shirt and underwear, Sewing files of briefs	Light to medium			FS701P-G0	Single edge	Equipped with a right and left independent differential feed adjustment mechanism
				FS703P-A-WG2D <i>LaRgo</i>	Single edge	
					Double edge Wide knife	
Joining crotches of briefs (with a tape binding operation on the leg openings without braided elastic inserts), Joining crotches of panties	Light to medium			FS701P-G1	Single edge	With groove of presser foot (shallow)
Sewing files with attaching tape of briefs	Light to medium			FS701TP-G0	Single edge	Without binder
				FS701-TP-G0/B	Single edge	With binder
Side seaming to light weight fabric and stretchable material, such as swimming wear and sport wear	Light			FS703P-G2	Double edge	With groove of presser foot (shallow)
				FS703P-A-G2 <i>LaRgo</i>	Double edge	With groove of presser foot (shallow). Equipped with a right and left independent differential feed adjustment mechanism
				FS701P-A-WG1 <i>LaRgo</i>	Single edge Wide knife	
Attach crotch pieces and sewing files of boxer briefs and knit trunks	Light			FS703P-G2B	Double edge	With groove of presser foot (shallow)
				FS703P-A-G2B <i>LaRgo</i>	Double edge	With groove of presser foot (shallow). Equipped with a right and left independent differential feed adjustment mechanism
				FS703P-A-WG2B <i>LaRgo</i>	Double edge Wide knife	
Side seaming to stretchable material, such as swimming wear and sport wear	Light			FS703P-G2C	Double edge	With groove of presser foot (shallow)
				FS703P-A-G2C <i>LaRgo</i>	Double edge	With groove of presser foot (shallow). Equipped with a right and left independent differential feed adjustment mechanism
				FS703P-A-WG2C <i>LaRgo</i>	Double edge Wide knife	
Joining shoulders of T-shirt and underwear, Sewing files of briefs		medium		FS703P-G3	Double edge	With groove of presser foot (middle)
Joining crotches of briefs (with a tape binding operation on the leg openings without braided elastic inserts), Sewing files of boxer briefs, Joining crotches of panties		Medium to heavy		FS703P-G4	Double edge	With groove of presser foot (deep)
Joining crotches of briefs (with a tape binding operation on the leg openings without braided elastic inserts)		heavy		FS703AP-G4	Double edge	With step of needle plate (1.0 mm). With groove of presser foot (deep)
Joining crotches of briefs (with a tape binding operation on the leg openings with braided elastic inserts), Side seaming of wet suits		heavy		FS703BP-G4	Double edge	With step of needle plate (1.5 mm). With groove of presser foot (deep)
Joining crotches of briefs (with a tape binding operation on the leg openings without braided elastic inserts), Sewing files of boxer briefs, Joining crotches of panties		Light to medium		FS713P-G0	Double edge	With groove of presser foot (shallow)
Joining crotches of briefs (with a tape binding operation on the leg openings without braided elastic inserts)		Medium to heavy		FS713AP-G0	Double edge	With step of needle plate (1.0 mm). With groove of presser foot (shallow)

* Both the FS713P-G0 and the FS713AP-G0 include the exclusive presser foot that helps the machine feed the fabric excellently.

* Applications and/or fabric weights provide a rough indication, so how to sew the fabric depends on each sewn product.

Ordering information

FS7 0 3 P — A — W G2 × 4 52 — 1 B / PL3A / PD23

- | | | | | |
|---|---|--|---|--|
| <p>① Length of presser foot
0: 38mm
1: 48.5mm</p> <p>② Trimming (fabric edge)
1: Single
3: Double</p> | <p>③ Shape of presser foot
A,B: Step of presser foot
T : For attach tape operation</p> <p>④ A: Right and left independent differential feed adjustment mechanism <i>LaRgo</i></p> | <p>⑤ W: Wide knife</p> <p>⑥ Groove of presser foot
See above</p> <p>⑦ No. of needle
4: 4 needles</p> | <p>⑧ Needle space
52: 5.2mm
60: 6.0mm</p> <p>⑨ Feed dog teeth pitch
1: 1.25mm
*standard 1.8mm</p> | <p>⑩ A: Different feed dog 5 rows
B: Long main feed dog</p> <p>⑪ Devices</p> <p>⑫ Installation
PD23: Table mount</p> |
|---|---|--|---|--|

FS700P Series Common specifications

No. of needles : 4 needles (a retainer needle is not included)
 No. of threads : 6 threads
 Needle space : 5.2mm, 6.0mm
 Main feed dog movement amount : 1.3mm - 2.5mm
 Diff. Feed ratio : 1:0.5 - 1:1.5
 Presser foot lift : Up to 5.5mm
 Max. machine speed : 4,200 sti/min

* Details of the specifications vary according to each subclass and sewing conditions.

* Max.machine speed of FS700P-A series *LaRgo* is 3,800 sti/min.

PEGASUS SEWING MACHINE MFG. CO., LTD.

5-7-2 Sagisu Fukushima-ku, Osaka 553-0002 Japan
 TEL : +81-6-6458-4739 / FAX : +81-6-6454-8785
 URL : <http://www.pegasus.co.jp>

* The specification and/or appearances of the equipment described in this catalog is subject to change without previous notice.



FS700P

SERIES



4-needle, feed-off-the-arm, interlock stitch machine for flatseaming