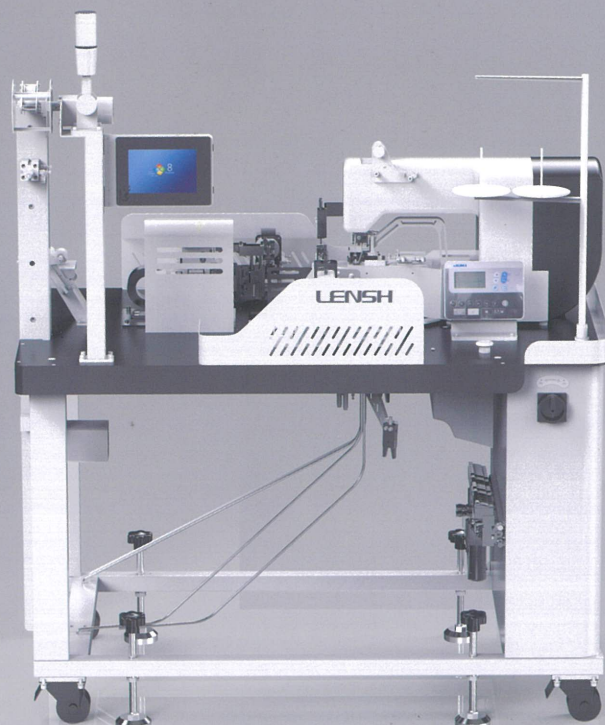


LS-5012A

绳头打结机

Rope head knotting machine



CE

LENSH®

应用范围 | Application

适用各类帽绳、裤绳的封头打结

It is suitable for knotting the head of all kinds of hoodie rope and trouser rope



规格范围 | Specification range

单折 单套结

Single fold Single set of knots



6~20 mm

10~15 mm

三折 单套结

Triple-fold single set of knots



6~20 mm

10~15 mm

三折 双套结

Triple-fold double knot



6~20 mm

15.0 mm

16.5 mm

25.0 mm

(3 Size)

两端封头

Heads at both ends



65~300 cm

单端封头

Single-ended head



30~300 cm

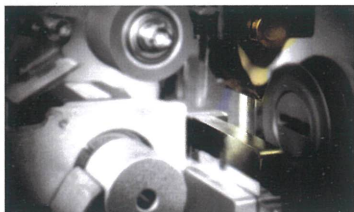
应用工艺 | Application process

应对不同工艺，提供配套选购设备及组件

provide matching equipment and components for different processes

冷热一体刀 (标配)

Hot and cold knife (standard)



适用化纤绳、棉绳的切断，无需换刀

It is suitable for cutting chemical fiber rope and cotton rope without changing the knife

远程数据采集系统 (选配)

Remote data collection system (optional)

LSSX



故障率数据 Failure rate data

产能数据 Capacity data

使用率数据 Usage data

效率分析 | Efficiency analysis

400%



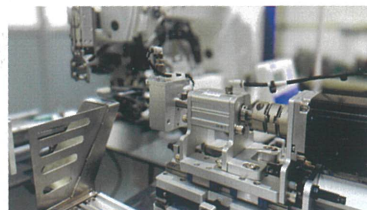
Before 约 32~35 s/pcs



需要人工量长度、切断、缝订、工序多效率低

It requires manual length, cutting, sewing, and low efficiency

After 约 5~7 s/pcs



无人自动化加工，高效高品质

Unmanned automatic processing, high efficiency and high quality

技术参数 | Technical parameters

型号	Model	LS-5012A
电压	Voltage	220V 50~60Hz Single 单相
功率	Power	3.5 KW
气压	Air Pressure	0.5~0.6 Mpa
耗气量	Gas Consumption	7 L/ Min
外形尺寸	Dimensions	1320*750*1470 MM
装箱尺寸	Packing size	1480*880*1750 MM
净重	Net weight	230 KG
毛重	Gross weight	340 KG

*以上型号仅供参考，详细情况请咨询。

The above models are for reference only, please inquire for details.

*为了改良，产品规格若有变更，恕不另行通知。为安全起见，使用之前，请仔细阅读使用手册。

For improvement, product specifications are subject to change without notice. For safety reasons, read the manual carefully before use.



浙江凌志智能科技有限公司
ZHEJIANG LENSHE INTELLIGENT TECHNOLOGY CO.,LTD.

地址：宁波市海曙区光文路500号 电话(TEL)：0574-8742 3969 0574-8388 5719

Address: No 500 RD Guangwen District Haishu Ningbo Zhejiang, China E-mail: wuhanqiao66@163.com web: www.lensh.net