

# SEIKO

## INSTRUCTION MANUAL

LDA-L26-1  
-T26-1  
-T36-2



SEIKO SEWING MACHINE CO., LTD.

## Contents

Application .....	2
Notes on safety .....	2
Commissioning .....	2
Belt guard .....	3
Lubrication .....	4
Inserting the needle .....	4
Threading the machine (L26-1/T26-1) .....	5
Threading the machine (T36-2) .....	6
Regulating thread tension .....	7
Presser foot pressure .....	7
Regulating the stitch length .....	7
Specifications .....	8

## Application

- LDA-L26-1/T26-1  
Two needle high speed chainstitch lap sewing machine.
- LDA-T36-2  
Three needle high speed chainstitch lap sewing machine.

## Notes on safety

- The machine must only be commissioned in full knowledge of the instruction manual and operated by persons with appropriate training.
- Before putting into service also read the safety notes and the instruction manual of the motor supplier.
- The machine must be used only for the purpose intended.  
Use of the machine without the safety devices belonging to it is not permitted.
- When gauge parts are exchanged (e.g. needle, presser foot, throat plate, feed dog), during threading, when the workplace is left, and during service work, the machine must be isolated from the mains by switching off the main switch or disconnecting the mains plug.
- On mechanically operated clutch motors without start inhibitor it is necessary to wait until the motor has stopped.
- General servicing work must be carried out only by appropriately trained persons.
- Repairs, conversion and special maintenance work must only be carried out by technicians or persons with appropriate training.
- Work on the electrical equipment must be carried out only by electricians or appropriately trained persons.
- Work on parts and systems under electric current is not permitted, except as specified in regulations EN50110.
- Conversions or changes to the machine must be made only on adherence to all safety regulations.
- For repairs, only replacement parts approved by us must be used.
- Commissioning of the sewing head is prohibited until such time as the entire sewing unit is found to comply with EC regulations.

Meaning of the symbols:



Danger spot  
Items requiring special attention



Danger of injury to operative or service staff  
Be sure to observe and adhere to these safety notes



Earth

## Commissioning



To avoid disturbances or damages it is absolutely necessary to observe the following instructions:

Before you put the machine into operation for the first time clean it thoroughly, and oil it well, as shown in Fig.3.

Have the mechanic check whether the motor can be used with existing mains voltage or not, and that junction box is correctly connected. Do not start the machine if the voltage is not correct

When the machine runs, the balance wheel must rotate toward the operator. If it does not, have the electrician change the wires on the motor.

## Belt guard

L26-1, as shown in Fig.1.

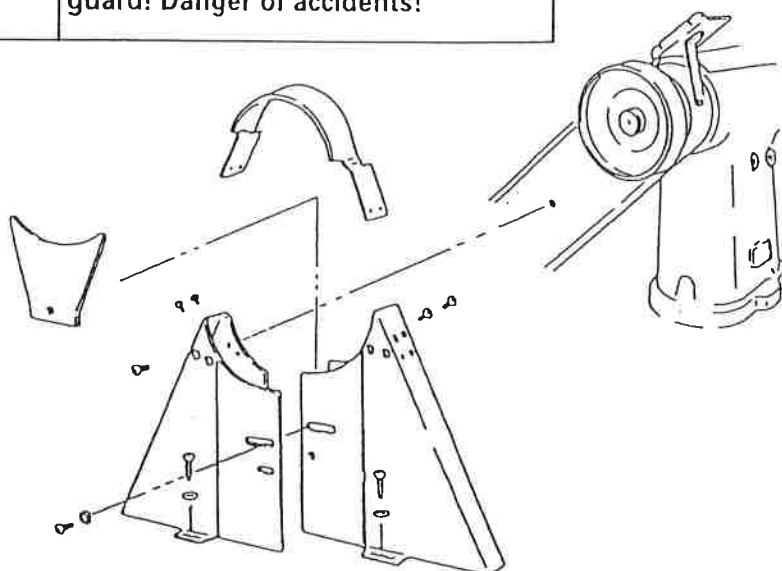
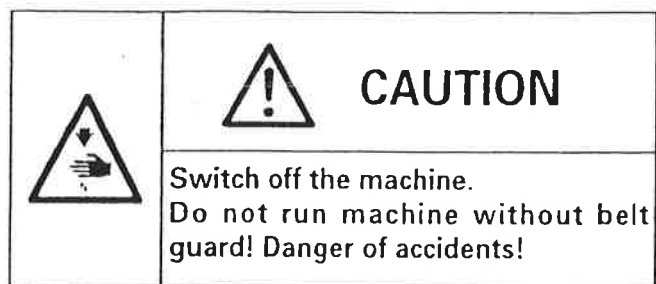


Fig.1

T26-1/T36-2, as shown in Fig.2.

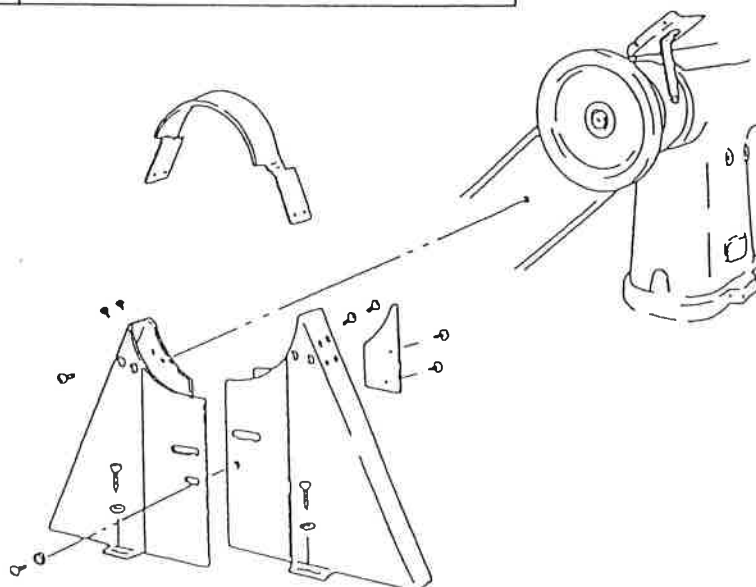
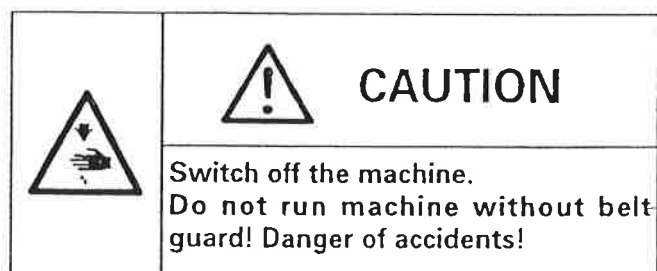


Fig.2

## Lubrication

Before starting machine, the oil reservoir which holds approximately 2 liters must be filled to high mark on sight gauge, as shown in Fig. 3.

Check oil level daily before starting machine. Should oil passing through oil flow window stop or become erratic, STOP machine and DO NOT run machine again until cause has been corrected.

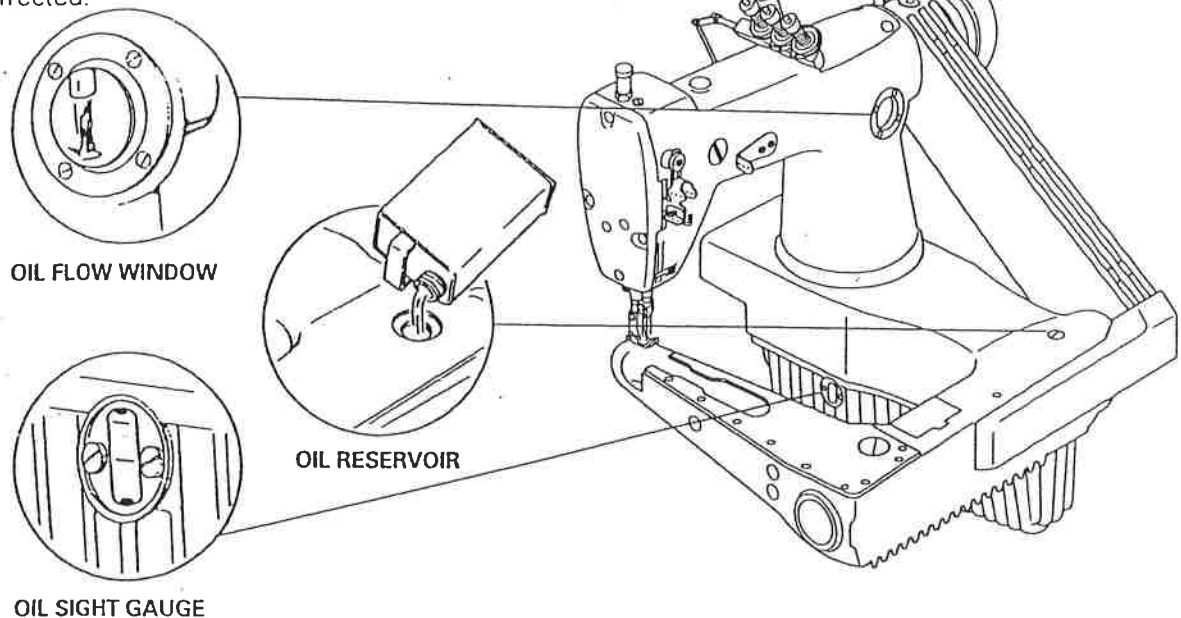


Fig.3

## Inserting the needle

Set the needle bar at its highest point. Loosen needle set screw ①. Insert the needle in the needle holder and push it up as far as it will go. Make sure its long groove faces toward the front. Tighten needle set screw ① securely, as shown in Fig. 4.

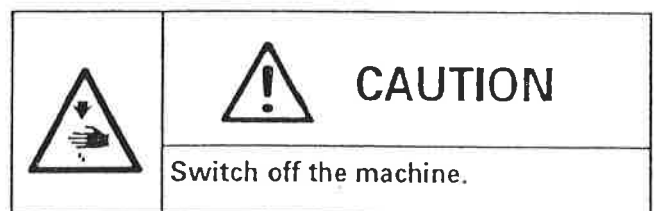


Fig.4

## Threading the machine (L26-1/T26-1)

### Needle thread.

Thread needle from front to back, as shown in Fig.5.

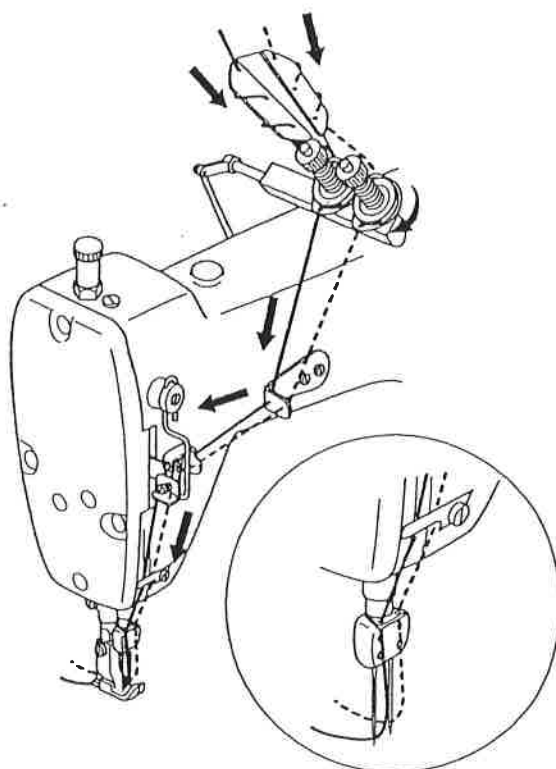
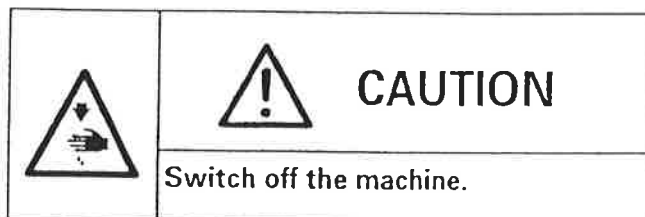


Fig.5

Looper thread, as shown in Fig. 6.

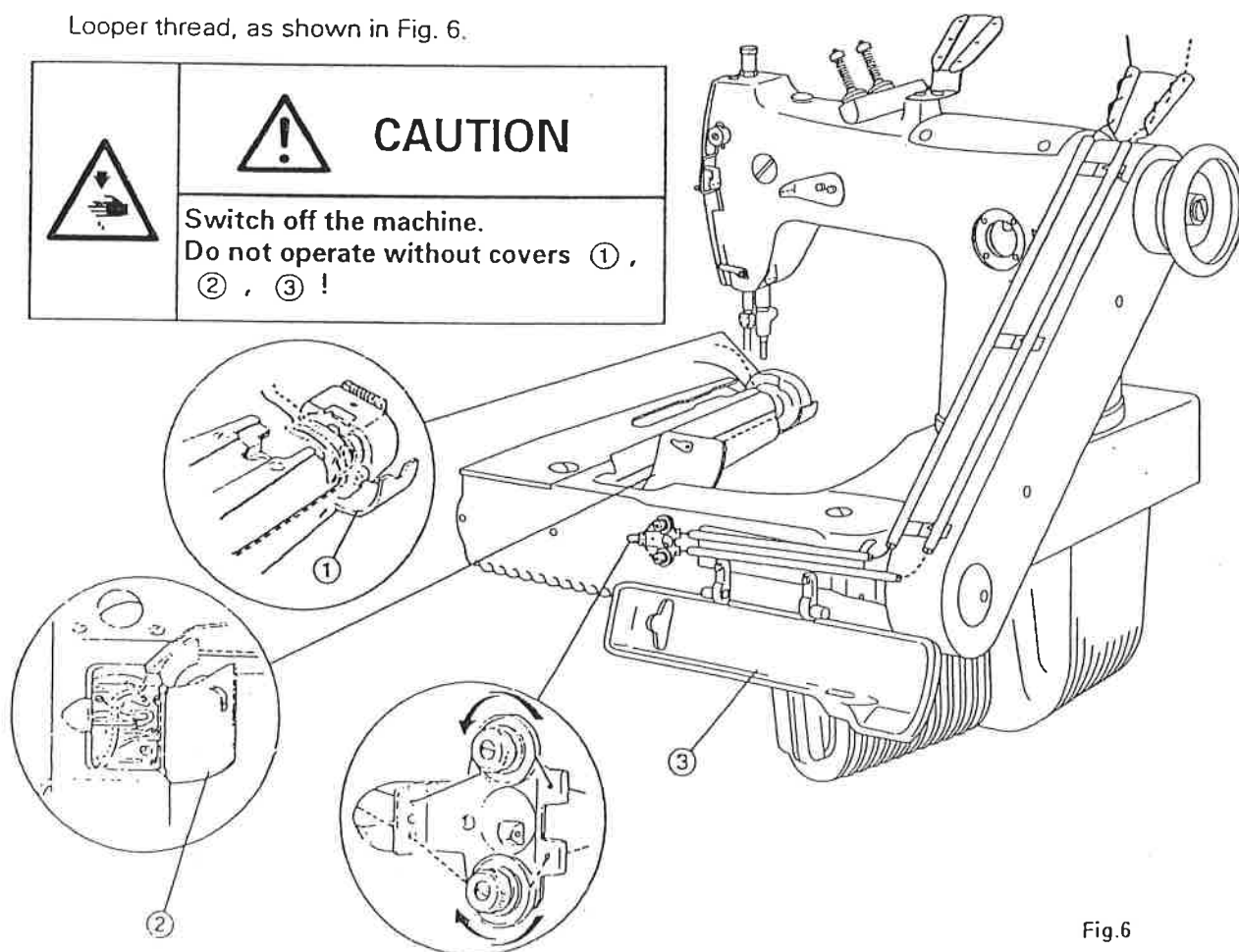
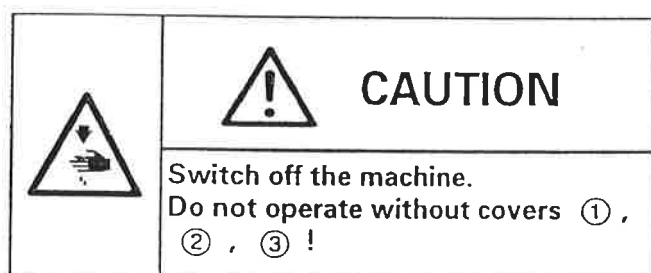


Fig.6

## Threading the machine (T36-2)

### Needle thread.

Thread needle from front to back, as shown in Fig. 7.

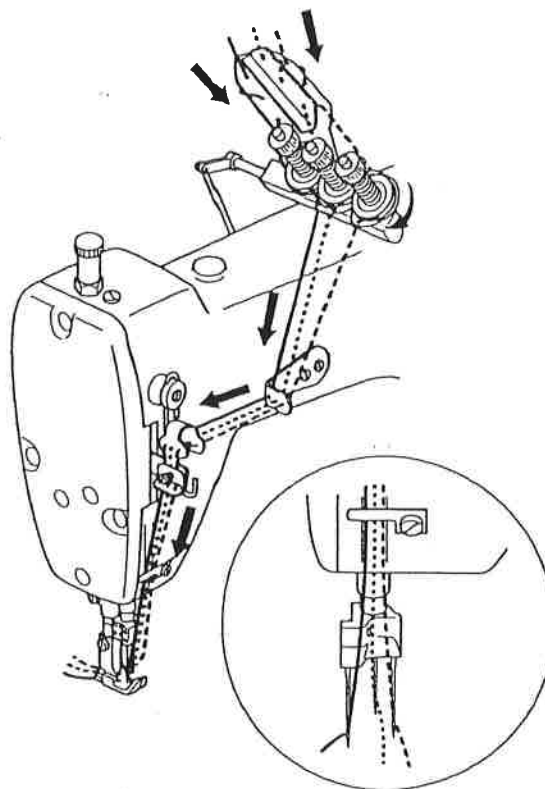
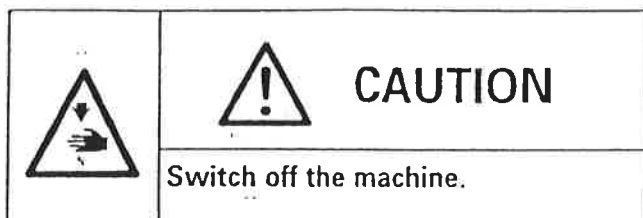


Fig.7

Looper thread, as shown in Fig. 8.

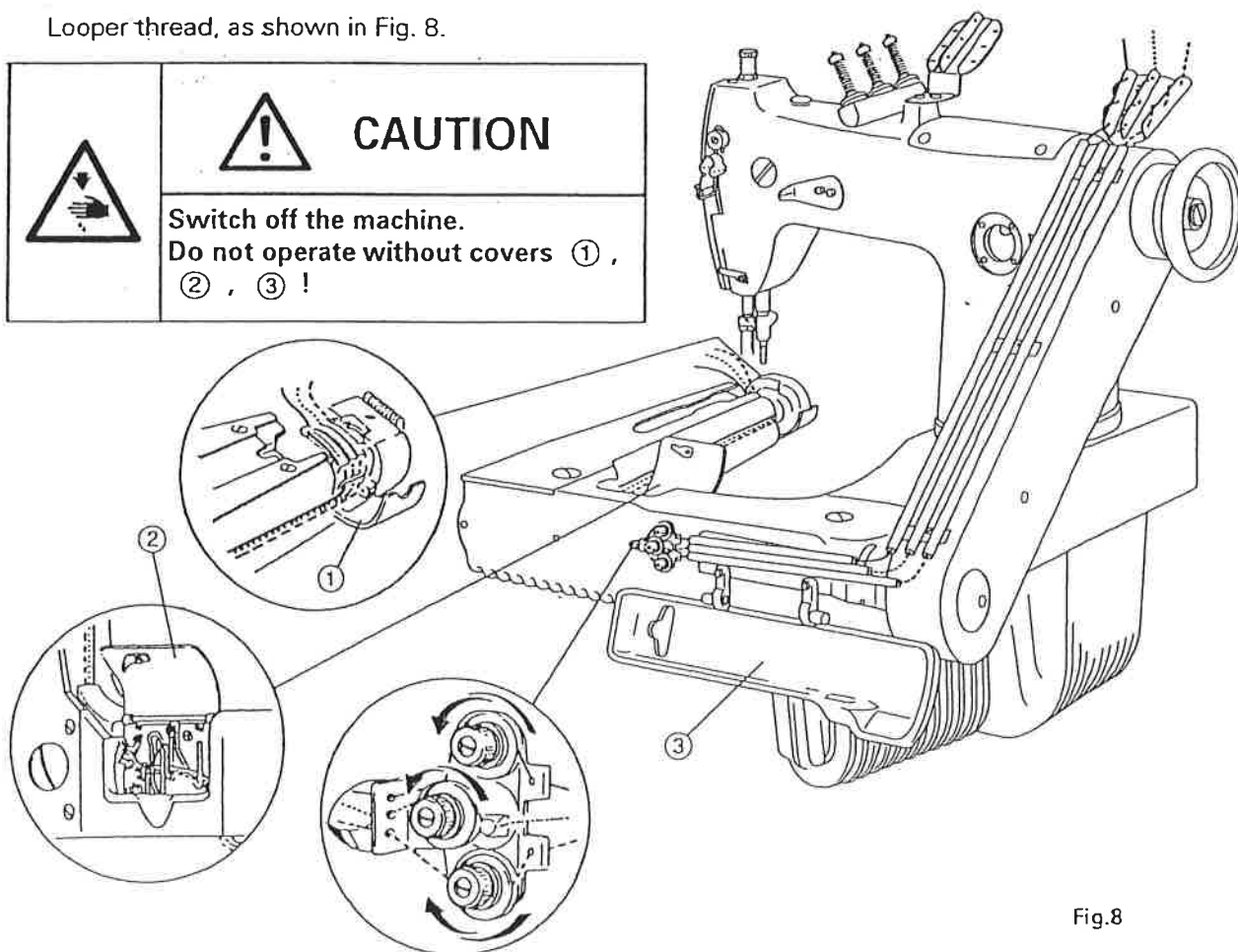
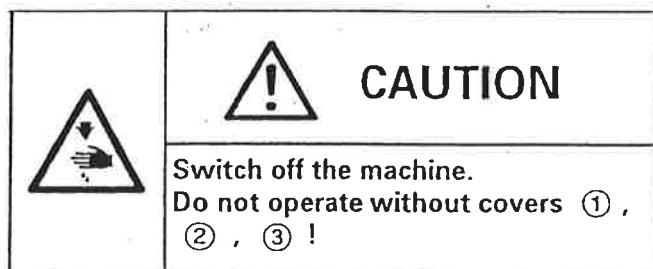
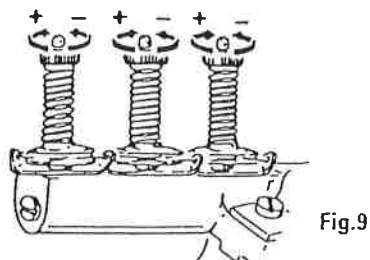


Fig.8

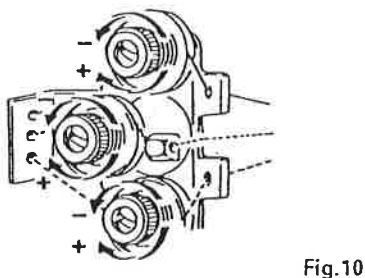
## Regulating thread tension

### Needle thread



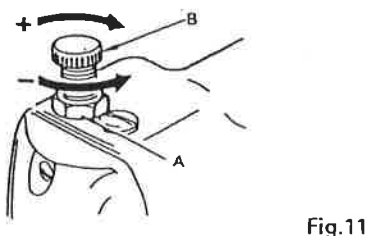
To regulate needle thread tension, turn thumb screw shown in Fig. 9 as may be required.

### Looper thread



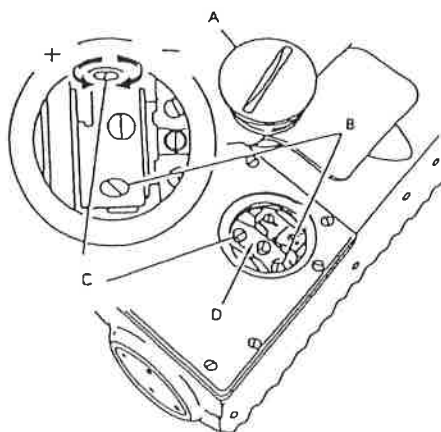
To regulate looper thread tension, open front cover plate and turn thumb screws shown in Fig. 10 as may be required.

### Presser foot pressure



To regulate presser foot pressure, loosen A on top of machine head and turn B shown in Fig.11.as may be required.

## Regulating the stitch length



To adjust the stitch length, remove the screw cap A from front end of cylinder arm cover, as shown in Fig.12.

Turn machine pulley until lock screw B, shown in Fig.12 is directly beneath hole.

Loosen lock screw B. Turn regulating screw C which projects beyond body of eccentric D clockwise (inward) for shorter stitch or counterclockwise (outward) for longer stitch.

Tighten lock screw B and replace screw cap A when desired stitch length is obtained.



**CAUTION**

Switch off the machine.  
Do not operate machine with screw cap remove.



## Specifications

Variety	L26-1	T26-1	T36-2
Stitch type	401 (chainstitch)		
For sewing	Light to Medium	Medium to Heavy	
Needle bar stroke	27.0 mm	33.3 mm	
Maximum speed *	6,500 s.p.m.	5,000 s.p.m.	
Maximum stitch length	2.5 mm	4.2 mm	
Presser bar lift	6.4 mm	8.0 mm	
Needle	TV X 7 #16	TV X 3 #21	
Machine pulley	73.8 mm	98.0 mm	
Lubrication system	Centrifugal pump which delivers oil to all bearings		
Oil return system	Plunger type oil return system		
Oil	High speed spindle oil (White)		
Workspace width	203.0 mm		
Workspace height	140.0 mm		
Machine dimensions	450.0 mm X 500.0 mm		
LPA	≤ 78 dBA		
A-weighted sound Pressure level	Noise measurement according to DIN 45 635-48-A-1		
Netweight (Head only)	48.5 kg	49.5 kg	
Gross weight(With accessories)	60.5 kg	61.5 kg	

\*NOTE The machine should be operated at a speed slower than the maximum recommended speed depending on the material and thread used and also on the type of work being done.

Design: dimension and weight etc. may be changed without notification when considered necessary.

## **SEIKO SEWING MACHINE CO., LTD.**

2-13-6 Sakaecho, Funabashi-shi Chiba Prefecture, 273-0018, Japan

TEL: 81-47-420-3561 (Overseas dept.)

FAX: 81-47-420-3560

E-mail: [export@seiko-sewing.co.jp](mailto:export@seiko-sewing.co.jp)

<http://www.seiko-sewing.co.jp/>